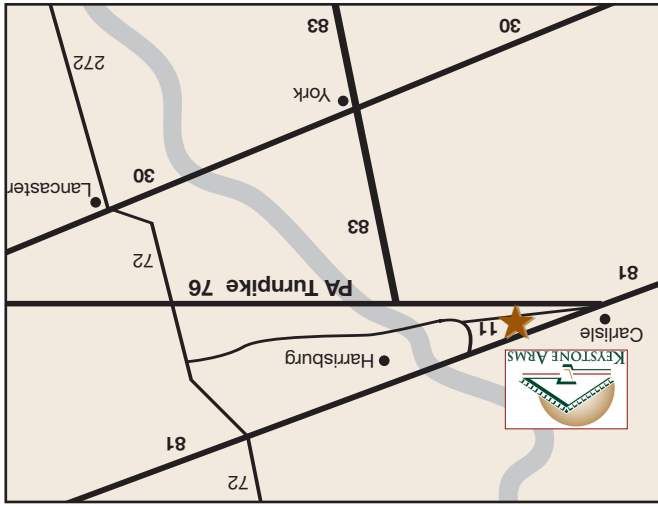
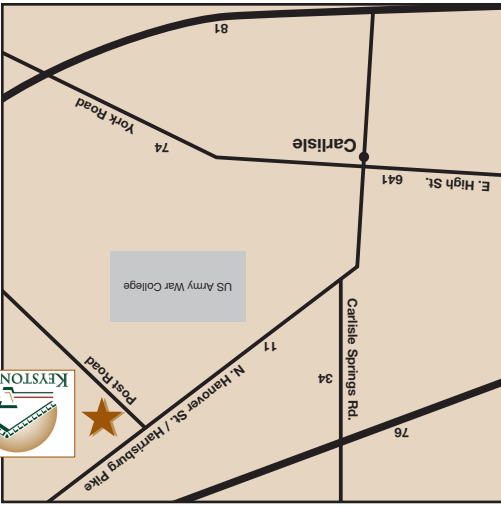


Keystone Arms

Boyd/Wilson Property Management is a family oriented company constantly raising the bar on what residents can expect, as they strive to make the simpler, less stressful lifestyle a reality for their residents. Our experienced staff will work with you to select the home that best suits your needs, budget and time frame. With one call, we will work out the details.

We are proud of Keystone Arms and the contribution it will make to the Carlisle community.

For more information, call 717-569-0484 or email keystonearms@boydwilson.com.



From PA Turnpike:
West to Carlisle (old #16, new #226) exit, right off exit onto Rt. 11 South to Post Road, community is on left.

From the Square in Carlisle:
North on Rt. 11 to Post Road, community is on the right.

From I-81:
Take exit 52 (from North) or exit 52B (from South) to Rt. 11 South to Post Road, community is on left.

This rental community is a commuter's dream with easy access to Interstate 81 and the PA Turnpike. Located adjacent to the renowned "Carlisle Army War College", and bordered by a natural wild trout stream known as the Letort Creek, this new rental community offers three bedroom townhomes.

Directions

Location. Location. Location.

We have great plans for you ...



What does it have?

The real question is ... what doesn't it have?

Coming in Spring 2007, surround yourself with comforts and qualities unmatched in luxury apartment living ... three bedroom floorplans welcome you to the contemporary style and convenience you deserve.

158 Townhomes

One will be perfect for you.

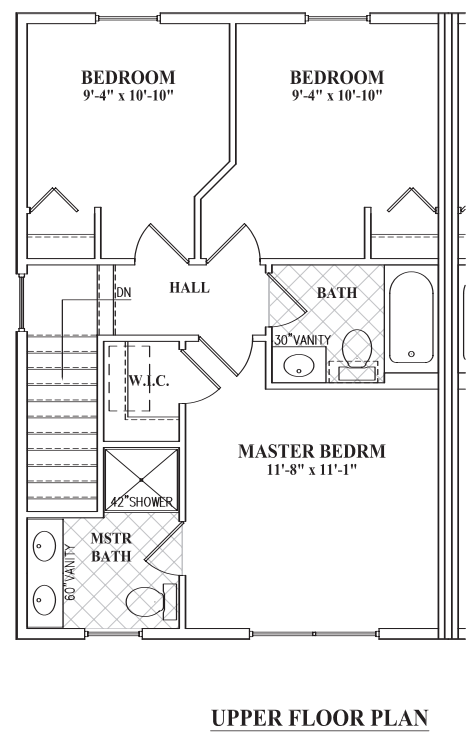
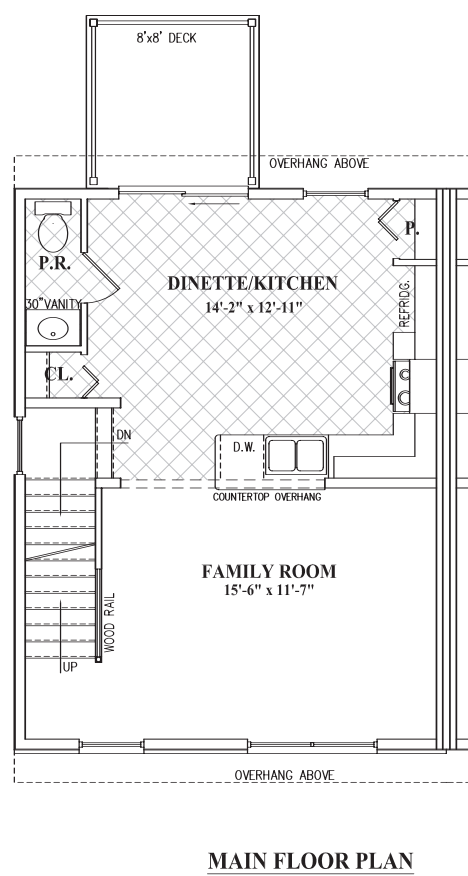
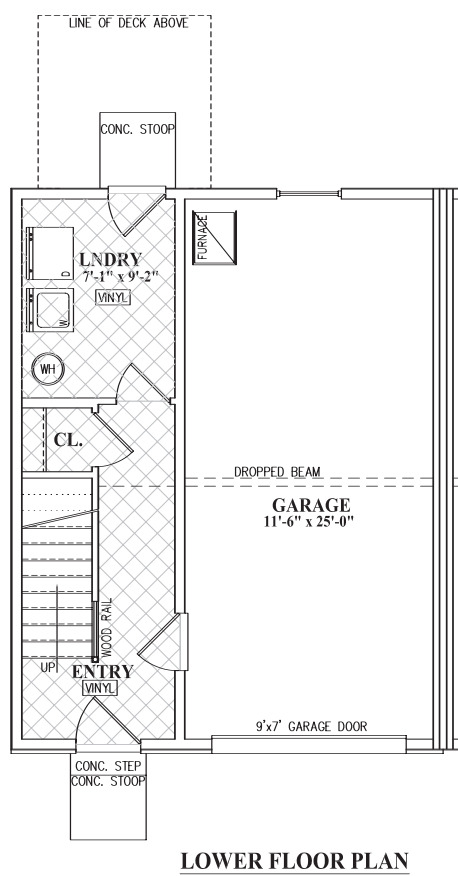
Your new home is overflowing with a multitude of amenities designed to fulfill every expectation.

Sheridan

3 bedrooms
2½ bath
1620 square feet

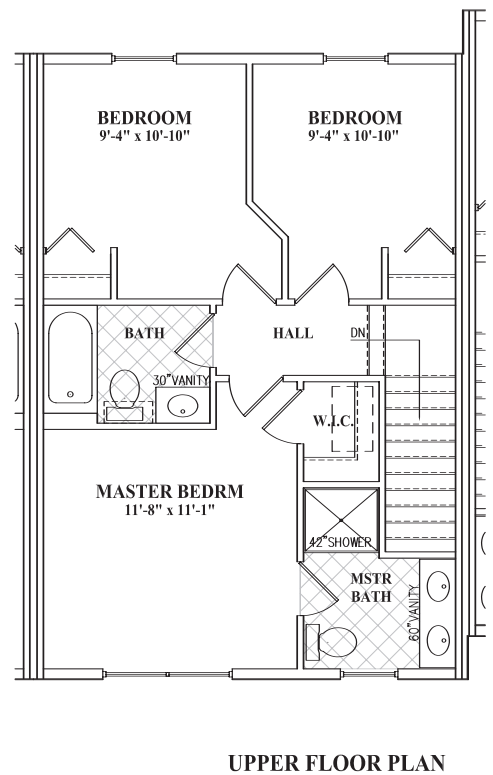
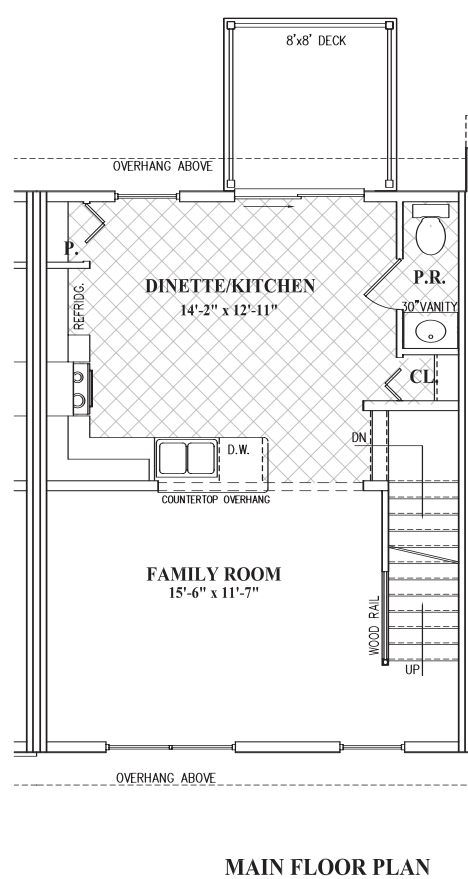
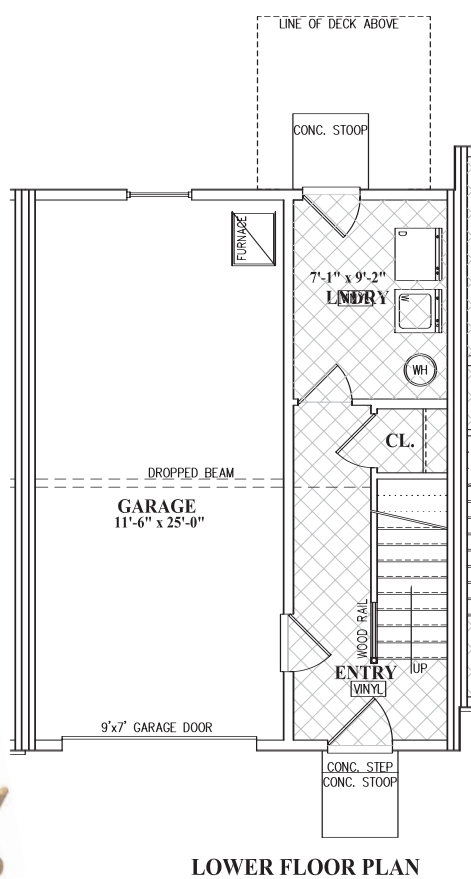
Amenities

- Professional Caring Management
- 24/7 Maintenance
- Water/Sewer/Trash, Lawn Care, Snow Removal included
- Central Air
- Gas Furnace
- Fully Equipped Kitchen
- Cable Ready
- Mini-blinds
- Washer/Dryer
- Dishwasher
- Microwave



*subject to availability (End)

We have the key to unlock your dream for the perfect rental home.



*subject to availability (Interior)